



COMPANY BROCHURE

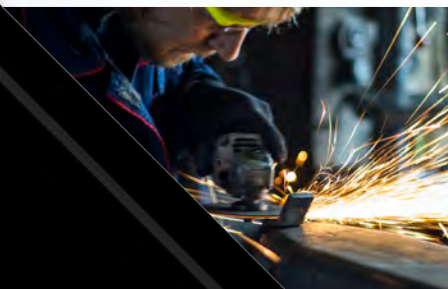
**A WORLD CLASS
CONTRACT MANUFACTURER**

About MFI Global

ESTABLISHED IN 1985, AS A FORGING MANUFACTURER in the heart of the Midwest, MFI Global has evolved over the years into a world-class, build-to-print contract manufacturer of metal and plastic parts. We specialize in the production of short run and high volume metal stampings, forgings, castings, fasteners, machining, extrusions, and plastic injection molding parts.

As an ISO/TS16949 and ISO9001 certified manufacturer, MFI Global supplies parts to some of the world's largest and most respected OEM manufacturers, including Kyocera, SFK Leblanc, Amsted Rail, Fastenal, Valeo, SPX Flow, Gibson Brands, and more. We also have extensive experience working with medium- sized corporations, small businesses, and even start-ups. Our management team has over 100 years of experience in the manufacturing industry and we are proud to serve as our customers' end-to-end manufacturing partner.

Our success is measured by our customers' ability to realize cost savings. Allow us to show you how we can dramatically reduce your costs and improve your bottom line. We welcome all inquiries and look forward to serving you.





Founder



STEVEN J. BANDAWAT
Founder & Chairman

Steven J. Bandawat was born and raised in Jodhpur, Rajasthan, India. When he was nineteen, he immigrated to the United States and attended the University of Arizona, where he obtained a B.S. in Mechanical Engineering. He also earned a Masters in Chemical Engineering and Masters in Business Administration from the University of Toledo.

Mr. Bandawat was as much a self-made man as possible. He began his career in the corporate world as a salesperson at IBM, where he won many awards for his sharp sales skills and moved up quickly within the company as one of their most prodigious sales people. With a combination of hardcore business sensibilities, education, and industry knowledge, Steven successfully ventured out of corporate America to realize his dream of becoming an entrepreneur. In doing so he accumulated more than 50 years of business experience, successfully founding and/or acquiring more than a dozen companies spanning industries as diverse as manufacturing, real estate, and even hospitality, and was a proud member of the prestigious Young Presidents' Organization.

Steven founded Michiana Forge in 1985 in the "Michiana" region as an ISO9000 certified manufacturer specializing in impression die forgings weighing from one ounce to two pounds. The company proudly touted its Chambersburg #8 Model C automated impacters, which were perfectly suited for high volume production runs on parts weighing less than one pound and requiring close tolerances. To meet demand, he expanded the business and its capabilities to include metal stampings, castings, machined parts, and plastic parts, and throughout the 1990s and early 2000s began offshoring manufacturing to lower cost markets. Under his leadership, the company was renamed MFI Global to reflect the company's status as a world class manufacturer serving worldwide markets. He continued to serve as the company's Chairman and foremost expert on global commerce and trade until his passing in 2018.

Steven was a resident of Paradise Valley, AZ for nearly 25 years and more recently Newport Beach, CA, and is survived by three grown children and his wife, Patricia. The renowned manufacturing company he established more than 35 years ago lives on as a testament to his vision and business acumen, with satisfied customers worldwide.

Management Team



PATRICIA BANDAWAT
President



PRADIKA CHAND
Accounting

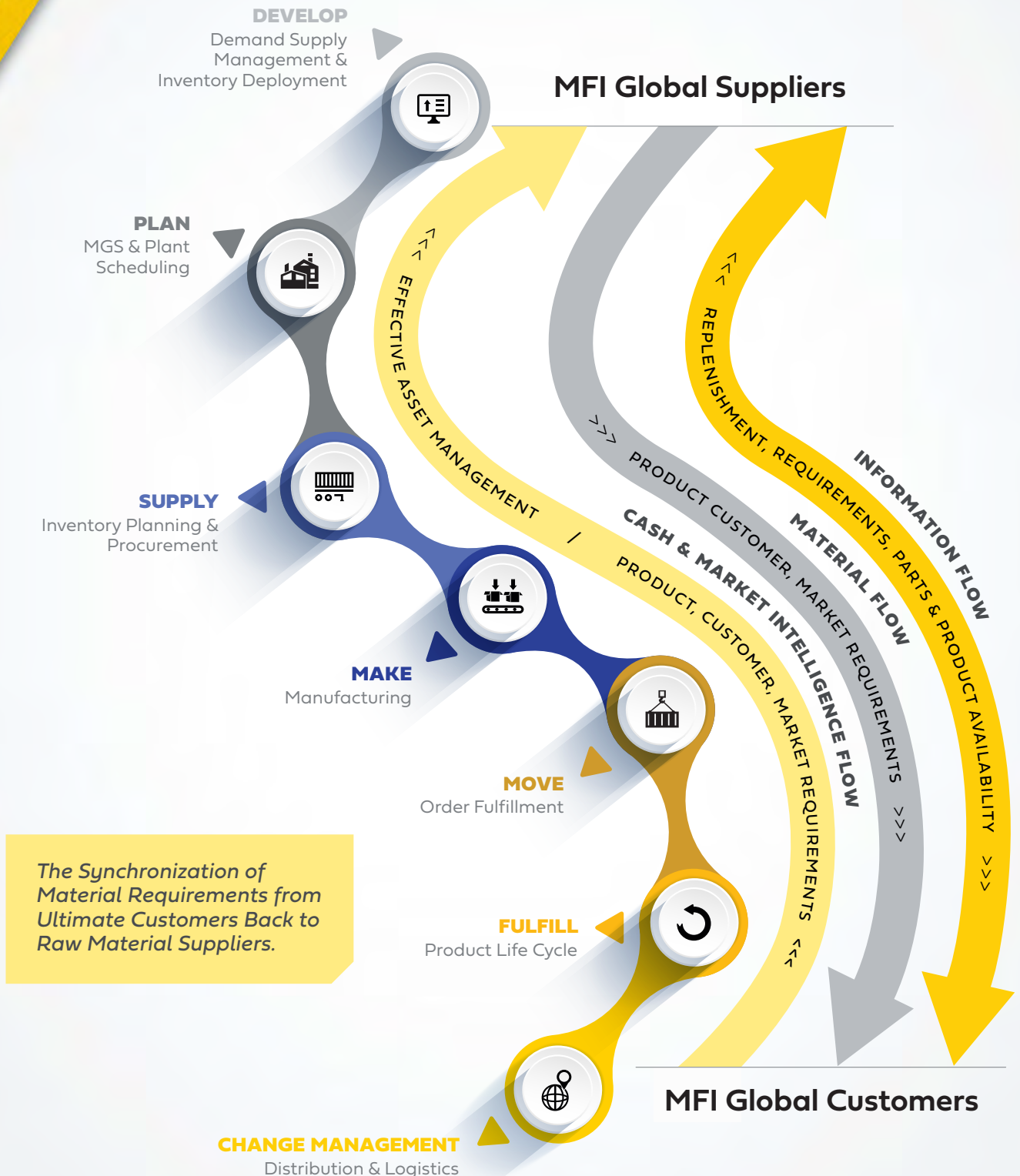


SEAN MICHAELS
Account Manager, Inside Sales



MARK ANDREWS
Office Manager





Notable Customers

Quality, costs, service, and lead times are the four pillars of a successful contract manufacturer. For more than 35 years, MFI Global has built a reputation for exceptional manufacturing and customer service, and we are proud to produce parts for some of the world's largest manufacturers and brands.



ISO Certification



The International Organization for Standardization, is an independent, non-governmental organization, the members of which are the standards organizations of the 162 member countries. It is the world's largest developer of voluntary international standards and facilitates world trade by providing common standards between nations. Over twenty thousand standards have been set covering everything from manufactured products and technology to food safety, agriculture and healthcare.

Use of the standards aids in the creation of products and services that are safe, reliable and of good quality. The standards help businesses increase productivity while minimizing errors and waste. By enabling products from different markets to be directly compared, they facilitate companies in entering new markets and assist in the development of global trade on a fair basis. The standards also serve to safeguard consumers and the end-users of products and services, ensuring that certified products conform to the minimum standards set internationally.





Equipment List

LASER CUTTING

- 2000 Watt CO² Laser
- Cutting Accuracy to within $\pm .003"$, with Outstanding Edge Quality
- DNC Linked to LAN System for Downloading Manufacturing Programs
- Cuts Mild Steel up to .500" Thick
- Cuts Stainless steel up to .187" Thick
- Cuts Aluminum up to .187" Thick
- Shuttle Tables Ensure Continuous Cutting. Cut-to-Cut Transfer Time is Approximately 30 Seconds
- Maximum Sheet Size is 78" W x 120" L
- Non-Contact Cutting Head
- Capable of Laser Etching
- Common Line Cutting Capable
- Capable of Cutting Holes in Pre-bent Parts or Tubing
- Fast Cutting Rates 20 ga. CRS (260 IPM) – 16 ga. CRS (210 IPM) – 12 ga. CRS (190 IPM) IPM – Inches per Minute

WELDING MACHINES

- Five (5) Rocker Arm Spot Welders. (1-25 KVA) (2-50 KVA) (2-75 KVA)
- Two (2) Multi Tip Press Welder. (100 KVA)
- High Frequency Spotwelder can Spot Weld Aluminum (100 KVA – 3 Phase)
- Stud Welding Gun
- Overhead Spot Welder (29 KVA)

MACHINE SHOP & TOOL ROOM

- Two (2) Vertical Milling Machines with Digital Readouts for Both Machines
- Two (2) Vertical Band Saws
- Horizontal Surface Grinder
- Turret Lathe
- Punch & Die Grinder
- In-house Tool Maintenance & Repair
- In-house Machining Services

ASSEMBLY & SHIPPING AREA

- Seven (7) Shipping Dock Level Doors with Dock Levelers and Door Seals
- Drive in Dock for Unloading Raw Materials Inside, away from the Elements
- Two (2) Drive-in Level Doors 14' W x 12' H for Handling Large Loads
- 10-Ton Overhead Crane for Moving Raw Materials throughout the Storage Bay
- 1-Ton Overhead Crane Dedicated to the Laser Machines for Loading and Unloading
- Three (3) Fork Lift Trucks
- Two (2) Fox C3 Automatic Pallet Wrapper



Equipment List (cont'd)

FORGING

- Two (2) 8,000 ft. lb. Chambersburg Impacter w/ Induction Heating System
- Two (2) 8,000 ft. lb. Chambersburg Die Forger w/ Induction Heating System
- 75-Ton Minster Trim Press
- 80-Ton Federal Trim Press
- 400-Ton Minster Coin Press
- 45-Ton Minster Mechanical Press
- 150-Ton Minster Mechanical Press
- Metal Muncher
- 50 hp Joy Compressor
- 100 hp Ingersoll Rand Compressor
- 10 Airtek Aftercoolers
- Garden Denver 125 hp
- Air Compressor
- 50 hp Sullair Air Compressor

STEEL CUTTING

- 75 ton Niagara Bar Shear
- Slugger Bar Shear Max 3"
- Two (2) Kalthenbach KKSs-400 Production Saws
- Kalthenbach Blade Sharper
- 4" Lathe Carrol Jamison
- Rockwell Belt Sander
- Northpoint Drill Sharpener
- South Bend Dekka Drill
- Bridgeport Mill
- AMW Surface Grinder

BRAKE PRESSES

- Four (4) 10' 125-Ton Amada Fine
- Benders c/w Auto Back Gauging
- Three (3) 8' 80-Ton Amada Fine
- Benders c/w Auto Back Gauging
- 14' 250-Ton Accurpress Press
- Brake c/w Auto Back Gauging
- 12' 130-Ton Accurpress Press
- Brake c/w Auto Back Gauging
- 10' 70-Ton Allsteel Press Brake
- 4' 20-Ton Diacro Press Brake
- Large Inventory of Press Brake Tooling

PUNCH PRESSES

- Four (4) O.B.I. Punch Presses
- Gap Frame Punch Press
- Coil Feeding up to 30" Stroke x
- 24"W x .090" Thick. Feed Tolerance $\pm .002$ "
- 30 to 600-Ton Capacity
- Coil Cradle Handles up to 2500 lbs.
- Pull through Straightener Handles up to 25"W x .110" Thick
- Bolster Size up to 50"W x 32"D & 84"W x 24"D

SHEARS

- 10' Amada Shear Handling Material up to 3/16" Thick in Mild Steel, or 1/8" Thick in Stainless Steel. Machine has a Blank Conveyor & Stacker
- 12 ft. Accurshear Handling Material up to 1/4" Thick Mild Steel, or 1/8" Thick in Stainless Steel
- 4' Shear



Equipment List (cont'd)

FABRICATION

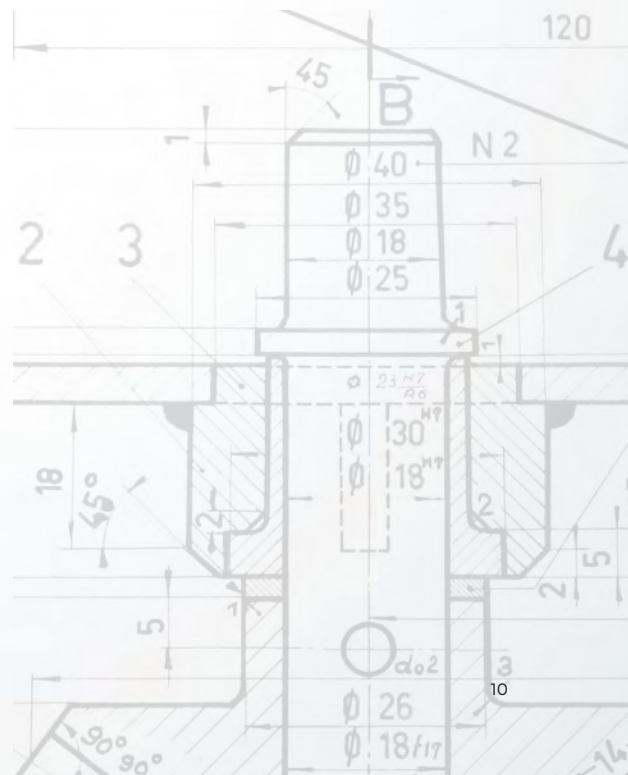
- 50-Ton Pierce-all Fabricator
- 30-Ton Strippit Fabricator
- Large Assortment of Tooling for Both Machines
- 42" Pinch Roller. Minimum Radius is 6"
- 3-Point Angle/Tube Roller
- Two (2) Pemserters. One (1) with Pem Feeder.
- Amada CSW220 Hydraulic 'V' & Edge Notcher
- Drill Presses
- Automatic Tappers
- Cold Cutting Saw for Tubing & Bar Stock
- 24" Radial Arm Saw for Wood or Non-ferrous Metals
- Deburring Machine

FINISHING

- 36" x 42" Wheelabrator Shot
- Blast Machine
- Wheelabrator Shot Blast Machine
- Wheelabrator Shot Blast Machine

ENGINEERING DESIGN & PROGRAMMING

- Four (4) CAD Stations Running Cadkey 2D
- Three (3) CAD Stations Running AutoCAD 2D
- Six (6) CAD Stations Running Solid Edge 3D Modeling Software STEP or IGES Format
- Two (2) Programming Stations. One (1) Running Metalsoft for NC Punching, the Other LVD Laser Programming.
- All NC Machines & Lasers are Connected via LAN System for DNC Downloading of Manufacturing Programs
- Email & Internet Access
- 'E' Size HP Design Jet Color Plotter
- Two (2) 'B' Size HP Laser Printers



Industries Served



INDUSTRIAL EQUIPMENT



HYDRAULICS



RAILROAD



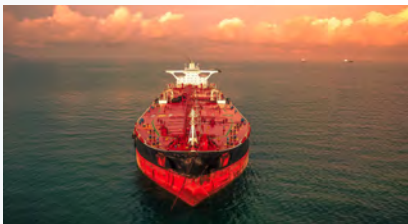
HARDWARE



INDUSTRIAL PUMPS



SHIELDING



MARINE



MINING



AGRICULTURE



MUSICAL INSTRUMENTS



HAND TOOLS



AUTOMOTIVE



TRUCKING



MILITARY

Our Capabilities

We have found success by focusing on the 4 pillars of operations management: quality, costs, service, and lead times. However, what sets us apart from other companies in our industry is our strategic investments: we own our factories, have invested in equipment, formed joint ventures, and negotiated numerous exclusive contracts that allow us to take effective ownership of your global manufacturing projects. These strategic investments, along with our expertise and experience, provide our customers with all of the benefits of outsourcing, as well as the advantages of working collaboratively with a 100% American owned and operated company every step of the way.



STAMPINGS



CASTINGS



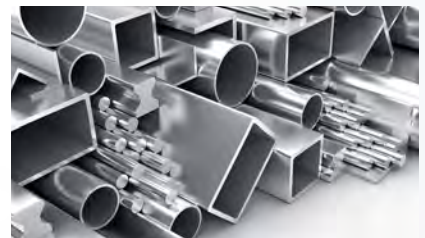
FORGINGS



MACHINING



FASTENERS



EXTRUSIONS



PLASTIC INJECTION MOLDING

Metal Stampings Gallery



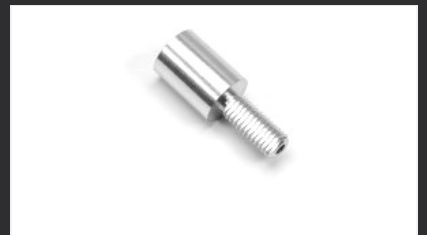
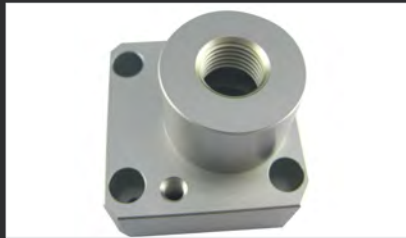
Castings Gallery



Forgings Gallery



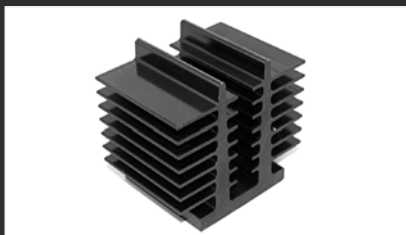
Machined Parts Gallery



Fasteners Gallery



Extrusions Gallery



Plastic Injection Molding Gallery





CONTACT US

P: 657.214.1968

E: sales@mfiglobal.com



HOURS

**8am - 5pm
M-F (PST)**



HEADQUARTERS

**363 San Miguel Dr., Suite 200
Newport Beach, CA 92660**



DISTRIBUTION CENTER

**11201 Jersey Blvd., Suite 102,
Rancho Cucamonga, CA 91730**

1985 **38** 2023
YEARS



MFI GLOBAL

MFI GLOBAL HEADQUARTERS
363 SAN MIGUEL DRIVE
SUITE 200
NEWPORT BEACH, CA 92660
SALES@MFIGLOBAL.COM
657.214.1968
MFIGLOBAL.COM

© Copyright 2023 MFI Global Manufacturing, Inc.